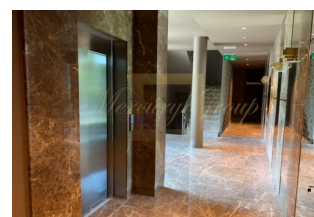




Apartment in luxury project near to the sea

Latvia, Jurmala and region

Price:	€ 748 800
Object type	Apartment
Number of rooms	3
Land area	142 m2
Apartment/building area	93.30 m2
Category	For sale



Villa Al Mare is a new luxury residential complex in the prestigious district of Jurmala - in Dzintari, the first line from the sea. The part of Jurmala, where the residential complex Villa Al Mare is located, is perhaps the best place for a comfortable life. The combination of excellent infrastructure, beautiful nature and dignified surroundings makes it the most prestigious area of the main Baltic resort. 3 minutes walk to the park and 10 minutes to the famous Jomas street, next to the complex there is everything for a comfortable life: parks for walking and sports, shops, restaurants and cozy cafes. You will not be bored on long evenings, because everything you need to relax is just a walking distance from you. In three minutes on foot there is a forest park-attraction Dzintari. In the forest park Dzintari in Jurmala, the adventure park Jurmala Tarzan has been built with five tracks with obstacles, which are intended for active rest of adults and children.

A modern highest quality residential complex. Monolithic building, 3-layer reflective Schucco windows, entrance lobby finishing with Belgian marble. Ceiling height 3.30 m (in penthouses 3.80 m). Gas heating, the ability to install a fireplace on any floor. There are 18 apartments for sale in a building on the first line to the sea, the living area of the apartments is from 81m2 to 179m2. Beautiful forest views, sea views from the upper floors. Each apartment has a spacious terrace / balcony.

Landscaped territory, underground parking and storage rooms. The cost of a parking space is 25,000 EUR.

The apartments are offered without finishing, which allows the new owners to realize their own ideas and wishes for finishing and interior design.

This ad offers an apartment located on the 2nd floor. Living area of the apartment is 93,3 m2, terrace area is 11 m2, landplot area 142m2.



ID: LV-48823
WWW.MERCURYESTATE.COM
TEL./VIBER/WHATSAPP:
+37120208819

Contacts:

Tamara Nikiforova

GSM: +37120208819

(Viber, WhatsApp)

E-mail: tamara@mgroup.lv